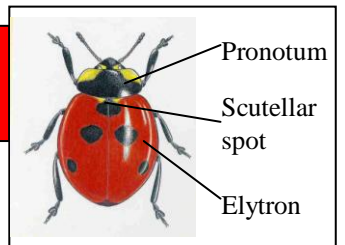


Colour guide to Cumbrian ladybirds

Carlisle Natural History Society, Tullie House Museum. © 2015
Images are not to scale



Wings red/orange with black spots



◄ **2-spot Ladybird**
 1 spot on each elytron.
 No black scutellar spot. 4-5.5mm.
 Common.



► **7-spot Ladybird**
 3 spots on each elytron + black scutellar spot. 6.5-8mm.
 Very Common.

► **10-spot Ladybird**
 Pronotum white with black spots. Pattern on elytra variable. 3.5-5mm. Common.



▲ **24-spot Ladybird**
 Small. Hairy. 3.5-4mm.
 Grassland. Mainly coastal.



▲ **5-spot Ladybird**
 2 spots on each elytron + black scutellar spot. 4-5mm.
 On shingle. Very rare.

► **11-spot Ladybird**
 5 spots on each elytron plus black scutellar spot. 3.5-5mm. Mainly coastal. Common.



► **Adonis' Ladybird**
 Distinctive pronotal pattern. Variable number of black spots on elytra. 4-5.5mm. Sandy grassland, mainly coastal. Rare.



▲ **Eyed Ladybird**
 Large with pale rings around dark spots. Large, 7-9mm. On pine.



◄ **Harlequin Ladybird**
 Large ladybird with variable number of spots.

Photo: Andreas Trepte, www.photo-natur.de

► **Hieroglyphic Ladybird**
 3 spots on each elytron + black scutellary spot. Foremost spot on elytra usually elongate. 3.5-4.5mm. Associated with heather.



Yellow wings with black spots



▲ **22-spot Ladybird**
 No black scutellar spot. 11 black spots on each elytron. 3.5-4.5mm. Grassland. Local.



▲ **14-spot Ladybird**
 Squarish black marks on elytra often fused. 3.5-5mm. Scrub & grassland. Widespread.



▲ **16-spot Ladybird**
 Black line along join between elytra. 8 black spots on each elytron, side ones often fused. 2.5-3.2mm. Marshland. Rare.



▲ **Water Ladybird**
 Somewhat elongate. 9 black spots on each elytron + black scutellary spot. Elytra paler in winter. 3.8-4.5mm. In reedbeds. Local.

Pale spots on orange/brown background



▲ **18-spot Ladybird**
Distinctive W-shaped mark at base of elytra. 4.5-5.5mm. On pine. Local.



▲ **Striped Ladybird**
Large species with pale stripes. 7-8mm. On conifers. Local.



▲ **Cream-spot Ladybird**
Spots arranged in neat rows. 5-6.5mm. Common.



▲ **Orange Ladybird**
Spots not arranged in rows. 5-6.5mm. Common.

Elytra pale with no obvious markings



◀ **Larch Ladybird** ▶
Dark M-shaped mark on pronotum. 3.8-5mm. Associated with conifers. Common.



Wings black with pale spots – elytra and pronotum with flange at edge



▲ **Pine Ladybird**
4 red marks on elytra. 3.5-4mm. On conifers. Local.



▲ **Heather Ladybird**
Head dark red. Red markings on elytra in a band or row of 2-3 small dots. 3.5-4mm. On heather. Local



▲ **Kidney-spot Ladybird**
Head black. 1 large, red, often kidney-shaped mark on each elytron. 4.5-5mm. On birch & willow. Local

Wings black with pale spots – elytra and pronotum without flange at edge



10-spot Ladybird
Melanis f. bimaeculata.
Pale legs.



10-spot Ladybird
(Chequered form). Pale legs, last segment of antenna truncate at tip.



2-spot Ladybird
f. quadrimaculata
Black legs, pale marks on pronotum restricted to a narrow edge.



Hieroglyphic Ladybird
Black legs, pale marks on front corners of pronotum.



Harlequin Ladybird
Large size. Can have 2, 4 or multiple red spots..